



DATA SHEET – POLYMAX EASY BAFFLE

Polymax Easy Baffle is thermally bonded polyester fibre insulation specifically designed to reduce sound transfer through suspended ceiling voids in offices and institutions such as education, healthcare and civic buildings.

Acoustic performance

When placed between a concrete slab soffit and the top junction of a plasterboard partition wall, Polymax Easy Baffle will achieve a transmission reduction of 9 – 16 decibels across a range of frequencies including general speech range frequencies – the most common nuisance noise in commercial buildings.

Polymax Easy Baffle has a Noise Reduction Coefficient (NRC) of 0.9 as tested in accordance with AS 1045.

Environmental benefits

Polymax Easy Baffle is manufactured from thermally bonded polyester fibre with a minimum of 80% recycled fibre content from post-consumer PET packaging such as empty drink bottles. The product is 100% recyclable and has very high reuse potential as insulation.

- No chemicals or phenol formaldehyde resin binders are used in manufacture.
- Odourless and contains no harmful volatile organic compounds (VOC).
- No waste is generated in manufacture.
- No water or ozone-depleting gases are used in manufacture.
- No chlorides are present in the product.
- Martini's product stewardship programme can be viewed at www.polymaxinsulation.com.au
- Suitable for use in Green Star™ projects.

Pack specifications

Pack Length mm	Pack Width mm	Pack depth mm	Batts Per Pack	NRC
1200	600	450	8	0.9



DATA SHEET – POLYMAX EASY BAFFLE

Physical description and properties

Volatiles:	Nil										
Specific Gravity:	1.38										
Flash Point:	None allocated										
Other Properties:	Non-allergenic, low irritant, low flame response, resilient										
Ingredients:	Organic, long chain synthetic polymer										
Max Service Temp:	150°C										
Alkalinity:	pH 7.8 (pH 7 is neutral)										
Moisture Absorption:	Exposure to an atmosphere of 50°C & 95% RH for four days gives moisture absorption of less than 0.2% by volume										
Fire Resistance:	The following results were obtained when Martini Industries Polymax was subjected to early fire hazard testing in accordance with Australian Standards AS 1530.3. Polymax meets all requirements of the BCA for all insulation applications	<table border="0"> <tr> <td>Ignitability</td> <td>0</td> </tr> <tr> <td>Spread of Flame</td> <td>0</td> </tr> <tr> <td>Heat Evolved</td> <td>0</td> </tr> <tr> <td>Smoke Developed</td> <td>0-1</td> </tr> </table>	Ignitability	0	Spread of Flame	0	Heat Evolved	0	Smoke Developed	0-1	
Ignitability	0										
Spread of Flame	0										
Heat Evolved	0										
Smoke Developed	0-1										

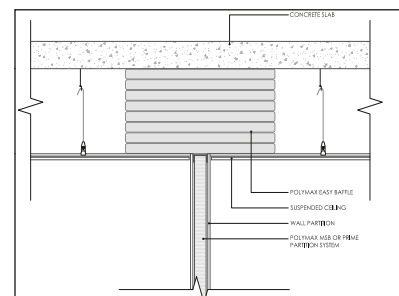
Installation

Polymax Easy Baffle is easy to install in ceiling voids. The product pack is compressed to a maximum thickness of 450mm, and one pack is designed to fit in a ceiling to soffit height of 600mm. If the void is greater than 600mm in height, add one extra batt for every 65mm over 600mm - the product can be made to order to suit other void heights subject to minimum quantities.

Installed in five easy steps:

1. Cut off both ends off the pack leaving the batts in the remaining sleeve.
2. Insert the batts in their sleeve into the void.
3. Centre the pack lengthways to follow the partition centre line.
4. Slit the remaining plastic sleeve and remove; the batts will then expand to fill the void.
5. Adjust batts to form an even stack for the next pack to abut to.

Where services such as AC ducts, pipes and cable trays run through the void then batts should be installed individually under, over and around the obstruction to a suitable compression.



Disclaimer: The information in this brochure is believed to be true at the time of publication. Martini Industries Pty Ltd reserves the right to change specifications without notice, and have no obligation or liability for persons misrepresenting or misusing this information in any manner whatsoever.

www.polymaxinsulation.com.au